

Mar 28th 2017

Blouse Second Fit

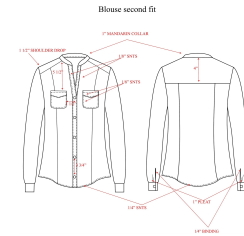
Dear Manager,

Please take a look at corrections below. Pictures attached.

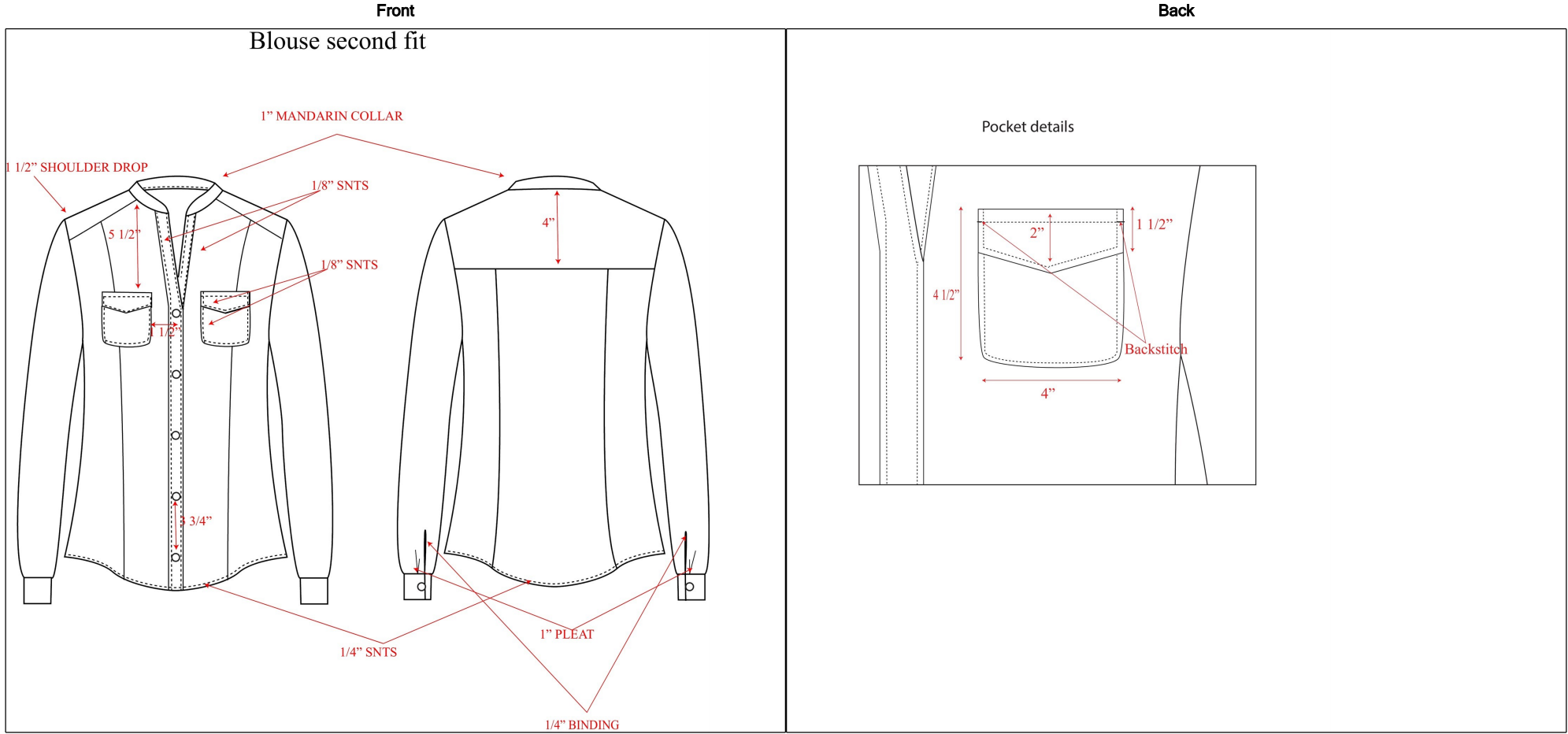
1. Uneven hem. Make even as Mannequin's Left
2. Fold the binding inside. Make like image to you right.
3. Uneven FTR NK opening. Make as left
4. Pocket flap too small. Make 1/4" wider to cover pocket opening.
5. Pocket sewn poorly and not straight. Make even and perpendicular to CF.
6. Improve sewing and placing of the pockets

Tatiana Grande

Style Type	Apparel	Garment Wash/Treatment		Division	Technical Design
No of Item(s)	1	Tech-Pack Due	4/6/2017	Active	Yes
Style No	1WT0534	Status	In Progress	Created By	GRANDE TATIANA
Description		Design Contact		Created Date	3/27/2017
Style Category	Woven Tops	Tech Design Contact		Modified By	GRANDE TATIANA
Size Range	0 - 20	Sourcing Contact		Modified Date	3/28/2017
Size Class	Missy				



Comments **Modified By**



Style Type	Apparel	Garment Wash/Treatment		Division	Technical Design
No of Item(s)	1	Tech-Pack Due	4/6/2017	Active	Yes
Style No	1WT0534	Status	In Progress	Created By	GRANDE TATIANA
Description		Design Contact		Created Date	3/27/2017
Style Category	Woven Tops	Tech Design Contact		Modified By	GRANDE TATIANA
Size Range	0 - 20	Sourcing Contact		Modified Date	3/28/2017
Size Class	Missy				

Modified By	Comments
-------------	----------

	<p>Color-Deep Violette</p> <p>Crepe georgette</p> <p>100% Silk</p>
--	--

1WT0534

Style Type	Apparel	Garment Wash/Treatment		Division	Technical Design
No of Item(s)	1	Tech-Pack Due	4/6/2017	Active	Yes
Style No	1WT0534	Status	In Progress	Created By	GRANDE TATIANA
Description		Design Contact		Created Date	3/27/2017
Style Category	Woven Tops	Tech Design Contact		Modified By	GRANDE TATIANA
Size Range	0 - 20	Sourcing Contact		Modified Date	3/28/2017
Size Class	Missy				

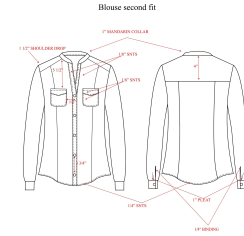
Modified By	Comments
-------------	----------



7X20L buttons
Color- Sivet Grey
Material- Plastic

1WT0534

Style Type	Apparel	Garment Wash/Treatment		Division	Technical Design
No of Item(s)	1	Tech-Pack Due	4/6/2017	Active	Yes
Style No	1WT0534	Status	In Progress	Created By	GRANDE TATIANA
Description		Design Contact		Created Date	3/27/2017
Style Category	Woven Tops	Tech Design Contact		Modified By	GRANDE TATIANA
Size Range	0 - 20	Sourcing Contact		Modified Date	3/28/2017
Size Class	Missy				

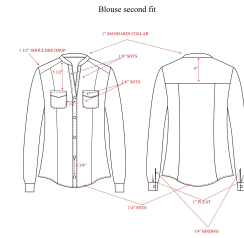


Product Type	Missy Top	Size Class	Missy	Sample Size	6
Description	Missy Top	Size Range	0 - 20	Method-System	Incremental - Imperial

POM	Description	+Tol	-Tol	Sample Size	Size												
					0	2	4	6	8	10	12	14	16	18	20		
					Active Size	Yes	Yes	Yes	Yes	Yes	Yes	Yes	Yes	Yes	Yes	Yes	Yes
					Grading	No	No	No	Yes	No	No	No	No	No	No	No	No
106	Front Length From HPS	1/4	-1/4	Grading	-1/4	-1/4	-1/4		1/4	3/8	3/8	3/8	3/8	3/8	3/8	3/8	3/8
				Measurement	25	25 1/4	25 1/2	25 3/4	26	26 3/8	26 3/4	27 1/8	27 1/2	27 7/8	28 1/4		
113	Across Shoulder	1/4	-1/4	Grading	-1/4	-1/2	-1/2		1/2	1/2	1/2	1/2	1/2	1/2	1/2	1/2	1/2
				Measurement	13 1/4	13 1/2	14	14 1/2	15	15 1/2	16	16 1/2	17	17 1/2	18		
115	Across Back - 5" HPS	1/4	-1/4	Grading	-3/8	-1/2	-1/2		1/2	1/2	1/2	1/2	1/2	1/2	5/8	5/8	5/8
				Measurement	12 5/8	13	13 1/2	14	14 1/2	15	15 1/2	16	16 1/2	17 1/8	17 3/4		
118	Across Front - 5" HPS	1/4	-1/4	Grading	-3/8	-1/2	-1/2		1/2	1/2	1/2	1/2	1/2	1/2	5/8	5/8	5/8
				Measurement	11 5/8	12	12 1/2	13	13 1/2	14	14 1/2	15	15 1/2	16 1/8	16 3/4		
119	Across Half Bust/ Chest - 1" Below Armhole	1/4	-1/4	Grading	-1/2	-1/2	-1/2		1/2	1/2	1/2	1/2	1/2	1/2	1/2	1/2	1/2
				Measurement	16 1/2	17	17 1/2	18	18 1/2	19	19 1/2	20	20 1/2	21	21 1/2		
120	Half Waist Relaxed	1/4	-1/4	Grading	-3/4	-1	-1		1	1	1	1	1	1	1 1/8	1 1/8	1 1/8
				Measurement	13 1/4	14	15	16	17	18	19	20	21	22 1/8	23 1/4		
127	Half Sweep	1/4	-1/4	Grading	-1	-1	-1		1	1	1	1	1	1	1	1	1
				Measurement	-22	-21	-20	-19	-18	-17	-16	-15	-14	-13	-12		
136	Half Cuff Relaxed	1/4	-1/4	Grading	-1/8	-1/8	-1/8		1/8	1/8	1/8	1/8	1/8	1/8	1/8	1/8	1/8
				Measurement	3 3/8	3 1/2	3 5/8	3 3/4	3 7/8	4	4 1/8	4 1/4	4 3/8	4 1/2	4 5/8		
142	Sleeve Length CB Neck - L/S	1/4	-1/4	Grading	-1/4	-1/4	-1/4		1/4	1/4	1/4	1/4	1/4	1/4	1/4	1/4	1/4
				Measurement	30 1/4	30 1/2	30 3/4	31	31 1/4	31 1/2	31 3/4	32	32 1/4	32 1/2	32 3/4		
147	Front Neck Drop HPS	1/4	-1/4	Grading	-1/8	-1/8	-1/8		1/8	1/8	1/8	1/8	1/8	1/8	1/8	1/8	1/8
				Measurement	2 7/8	3	3 1/8	3 1/4	3 3/8	3 1/2	3 5/8	3 3/4	3 7/8	4	4 1/8		

Style Type Apparel
No of Item(s) 1
Style No 1WT0534
Description
Style Category Woven Tops
Size Range 0 - 20
Size Class Missy
Garment Wash/Treatment
Tech-Pack Due 4/6/2017
Status In Progress
Design Contact
Tech Design Contact
Sourcing Contact

Division Technical Design
Active Yes
Created By GRANDE TATIANA
Created Date 3/27/2017
Modified By GRANDE TATIANA
Modified Date 3/28/2017



Product Type	Missy Top	Size Class	Missy	Sample Size	6
Description	Missy Top	Size Range	0 - 20	Method-System	Incremental - Imperial

POM	Description	+Tol	-Tol	Sample Size	Size											
					0	2	4	6	8	10	12	14	16	18	20	
148	Back Neck Drop HPS	1/4	-1/4	No	Grading	-1/8	-1/8	-1/8		1/8	1/8	1/8	1/8	1/8	1/8	1/8
					Measurement	0	1/8	1/4	3/8	1/2	5/8	3/4	7/8	1	1 1/8	1 1/4
167	Pocket From HPS	1/4	-1/4	No	Grading	-1/4	-1/4	-1/4		1/4	1/4	1/4	1/4	1/4	1/4	1/4
					Measurement	4 1/2	4 3/4	5	5 1/4	5 1/2	5 3/4	6	6 1/4	6 1/2	6 3/4	7
230	Armhole - Full	1/4	-1/4	No	Grading	-3/8	-3/8	-3/8		3/8	3/8	3/8	3/8	3/8	3/8	3/8
					Measurement	15 5/8	16	16 3/8	16 3/4	17 1/8	17 1/2	17 7/8	18 1/4	18 5/8	19	19 3/8
300	Pocket Width	1/4	-1/4	Yes	Grading	0	0	0		0	0	0	0	0	0	0
					Measurement	4	4	4	4	4	4	4	4	4	4	4
300B	Pocket Length	1/4	-1/4	No	Grading	0	0	0		0	0	0	0	0	0	0
					Measurement	5	5	5	5	5	5	5	5	5	5	5
300C	Pocket Flap Width	1/4	-1/4	No	Grading	0	0	0		0	0	0	0	0	0	0
					Measurement	4 1/8	4 1/8	4 1/8	4 1/8	4 1/8	4 1/8	4 1/8	4 1/8	4 1/8	4 1/8	4 1/8
300D	Pocket Flap Length	1/4	-1/4	No	Grading	0	0	0		0	0	0	0	0	0	0
					Measurement	1 3/4	1 3/4	1 3/4	1 3/4	1 3/4	1 3/4	1 3/4	1 3/4	1 3/4	1 3/4	1 3/4
302	Collar Height	1/4	-1/4	Yes	Grading	0	0	0		0	0	0	0	0	0	0
					Measurement	1	1	1	1	1	1	1	1	1	1	1
303	Cuff Height	1/4	-1/4	Yes	Grading	0	0	0		0	0	0	0	0	0	0
					Measurement	2	2	2	2	2	2	2	2	2	2	2
304	Yoke Depth - Bottom	1/4	-1/4	No	Grading	-3/8	-3/8	-3/8		3/8	3/8	3/8	3/8	3/8	3/8	3/8
					Measurement	2 7/8	3 1/4	3 5/8	4	4 3/8	4 3/4	5 1/8	5 1/2	5 7/8	6 1/4	6 5/8

Style Type	Apparel	Garment Wash/Treatment		Division	Technical Design
No of Item(s)	1	Tech-Pack Due	4/6/2017	Active	Yes
Style No	1WT0534	Status	In Progress	Created By	GRANDE TATIANA
Description		Design Contact		Created Date	3/27/2017
Style Category	Woven Tops	Tech Design Contact		Modified By	GRANDE TATIANA
Size Range	0 - 20	Sourcing Contact		Modified Date	3/28/2017
Size Class	Missy				

Modified By	Comments
-------------	----------



Second fit Blouse

1WT0534

Style Type	Apparel	Garment Wash/Treatment		Division	Technical Design
No of Item(s)	1	Tech-Pack Due	4/6/2017	Active	Yes
Style No	1WT0534	Status	In Progress	Created By	GRANDE TATIANA
Description		Design Contact		Created Date	3/27/2017
Style Category	Woven Tops	Tech Design Contact		Modified By	GRANDE TATIANA
Size Range	0 - 20	Sourcing Contact		Modified Date	3/28/2017
Size Class	Missy				

Modified By	Comments
-------------	----------



1. UNEVEN HEM. MAKE EVEN AS MANIQUEN'S LEFT

1WT0534

Style Type	Apparel	Garment Wash/Treatment		Division	Technical Design
No of Item(s)	1	Tech-Pack Due	4/6/2017	Active	Yes
Style No	1WT0534	Status	In Progress	Created By	GRANDE TATIANA
Description		Design Contact		Created Date	3/27/2017
Style Category	Woven Tops	Tech Design Contact		Modified By	GRANDE TATIANA
Size Range	0 - 20	Sourcing Contact		Modified Date	3/28/2017
Size Class	Missy				



NOT CORRECT.

CORRECT.

2. FOLD THE BINDING. MAKE LIKE IMAGE TO YOUR RIGHT.

1WT0534



3. UNEVEN FRT NK OPENING. MAKE EVEN AS MANIQUEN'S LEFT

1WT0534

Style Type	Apparel	Garment Wash/Treatment		Division	Technical Design
No of Item(s)	1	Tech-Pack Due	4/6/2017	Active	Yes
Style No	1WT0534	Status	In Progress	Created By	GRANDE TATIANA
Description		Design Contact		Created Date	3/27/2017
Style Category	Woven Tops	Tech Design Contact		Modified By	GRANDE TATIANA
Size Range	0 - 20	Sourcing Contact		Modified Date	3/28/2017
Size Class	Missy				



- 4. POCKET FLAP TOO SMALL MAKE 1/4" BIGGER TO COVER POCKET OPENING
- 5. POCKET SEWN POORLY AND NOT STRAIGHT. MAKE SEAM EVEN AND PERPENDICULAR TO CF
- 6. IMPROVE SEWING AND PLACING OF THE POCKET

1WT0534

Style Type	Apparel	Garment Wash/Treatment		Division	Technical Design
No of Item(s)	1	Tech-Pack Due	4/6/2017	Active	Yes
Style No	1WT0534	Status	In Progress	Created By	GRANDE TATIANA
Description		Design Contact		Created Date	3/27/2017
Style Category	Woven Tops	Tech Design Contact		Modified By	GRANDE TATIANA
Size Range	0 - 20	Sourcing Contact		Modified Date	3/28/2017
Size Class	Missy				

Modified By	Comments
-------------	----------

<p style="text-align: center;">Blouse second fit</p>	<p>Mar 28th 2017</p> <p>Blouse Second Fit</p> <p>Attending fit: Deborah Beard Tatiana Grande.</p> <ol style="list-style-type: none"> 1. Uneven hem. Make even as Mannequin's Left 2. Fold the binding inside. Make like image to you right. 3. Uneven FTR NK opening. Make as left 4. Pocket flap too small. Make 1/4" wider to cover pocket opening. 5. Pocket sewn poorly and not straight. Make even and perpendicular to CF. 6. Improve sewing and placing of the pockets.
<p>1WT0534</p>	





